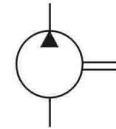
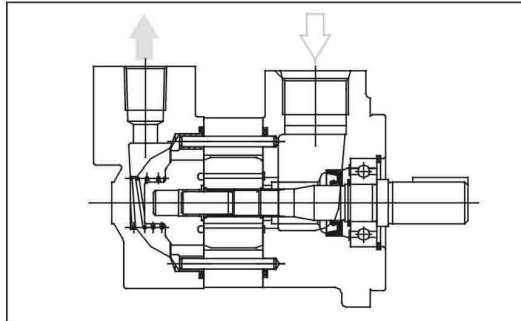


# V10、V20 Series Vane Pumps

—For Industrial Equipment



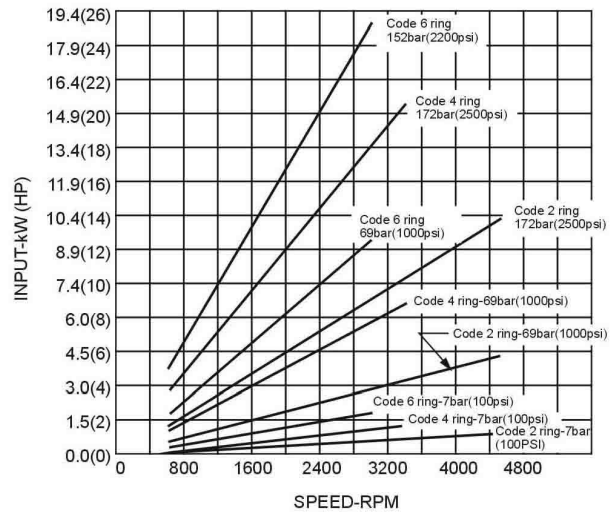
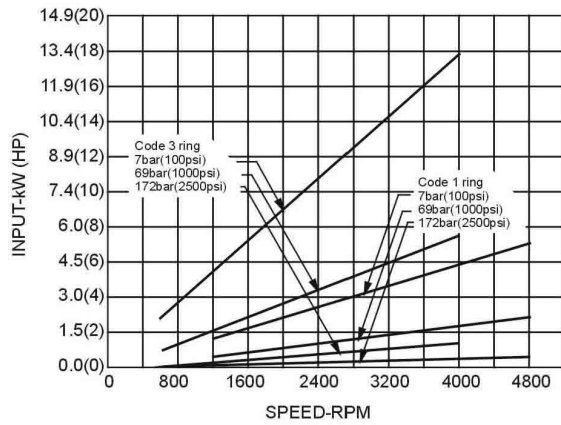
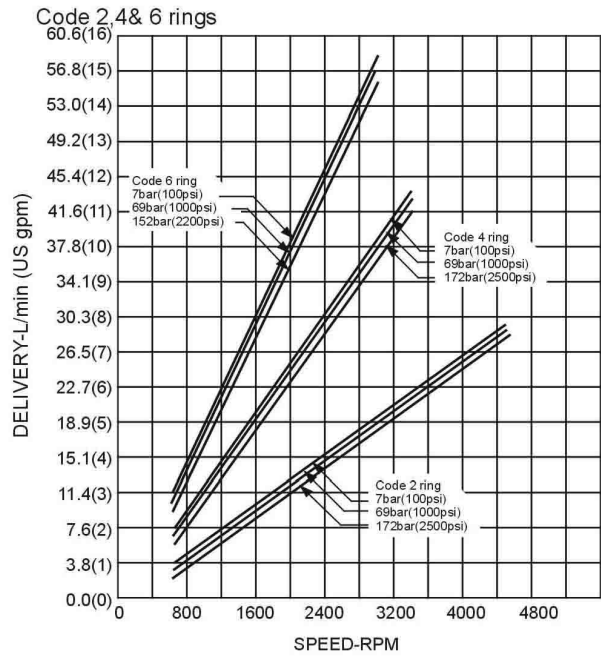
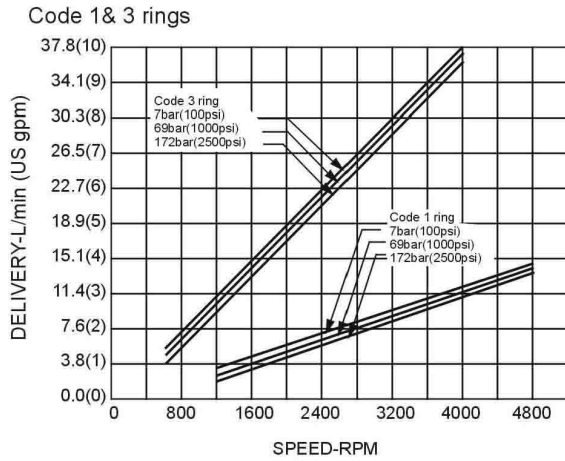
## Model Code

(F3-)	V10	-P	7	S	-1	C	20	-L
Prefix	Series	Inlet port connections	Code	Outlet port connections	Shafts	Outlet Positions	Design	Rotation
Omit-Usting antiwear oil water glycol fluid	V10	P-1" NPT thread S-1.3125-12 straight thread B-G1" thread	1,2,3,4, 5,6,7	P-1/2" NPT thread S-0.750-16 straight thread B-G1/2" thread	1-Str, Key 11-Spline 38-11tooth -3/4" OD.	(Viewed from cover end of pump) A-Opposite inlet port B-90°CCW from inlet	20	(Viewed from shaft end of pump) L-Left hand for counter clockwise
F3-Phosphate ester fluid	V20	P-1-1/4" NPT thread S-1.625-12 straight B-G1-1/4" thread	6,7,8,9, 10,11,12, 13,14	P-3/4" NPT thread S-1.1875-12 straight thread B-G3/4" thread	62-spline (V20 only)	C-In line with in inlet D-90° CW from inlet	10	R-Right hand for clockwise

## Specification

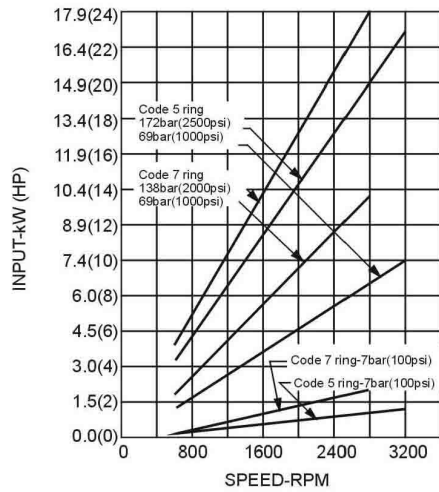
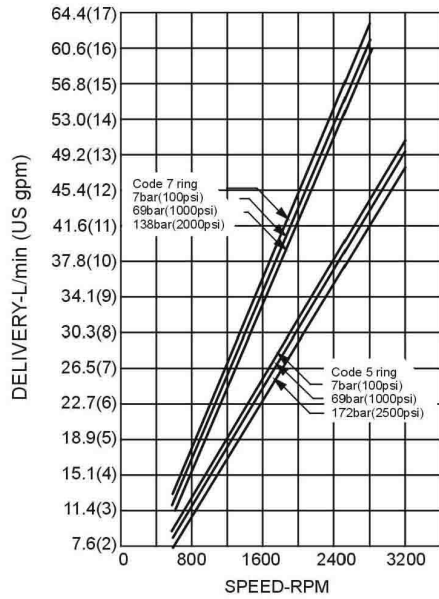
Model	Code	Geometric Displacement mL/r	Using anti-wear oil or phosphate ester fluid		Using water glycol fluid		Using water-in-oil emulsion	
			Max.pressure MPa	Max.Speed r/min	Max.pressure MPa	Max.Speed r/min	Max.pressure MPa	Max.Speed r/min
V10	1	3.3	17.2	4800	12.4	1800	10.3	1800
	2	6.6		4500				
	3	9.8		4000				
	4	13.1		3400				
	5	16.4		3200				
	6	19.5	15.2	3000	10.9			
	7	22.8	13.8	2800				
V20	6	19.5	17.2	3400	12.4	1800	10.9	1800
	7	22.8		3000				
	8	26.5		2800				
	9	29.7						
	10	30.0	15.2	2500	10.9	9.3		
	11	36.4		2400				
	12	39						
	13	42.4	15.2	2400	10.9	9.3		
14	45							

V10



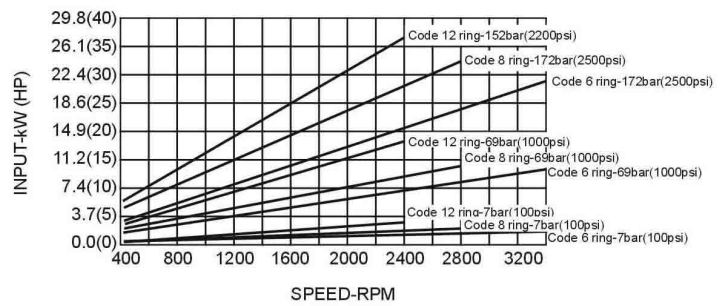
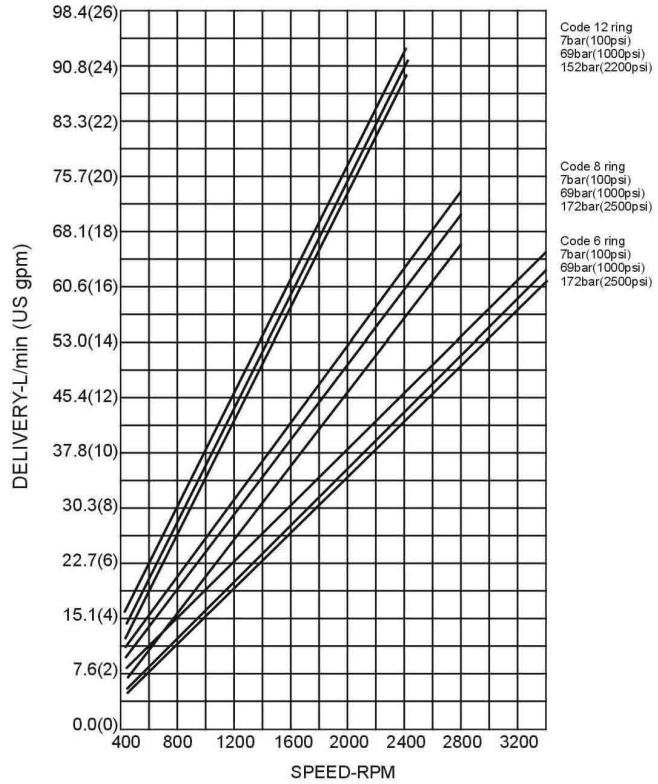
V10

Code 5 & 7 rings



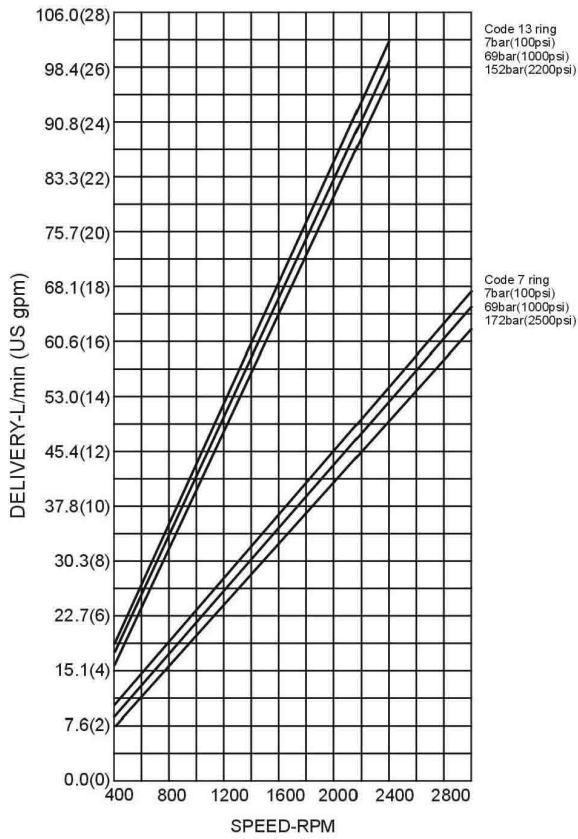
V20

Code 6,8 &12 rings

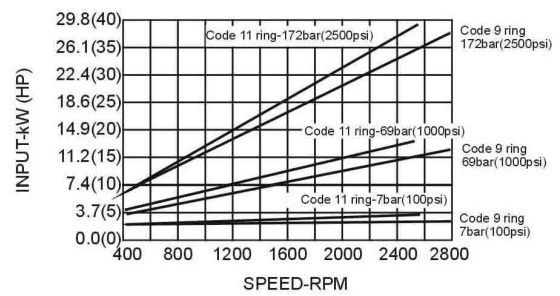
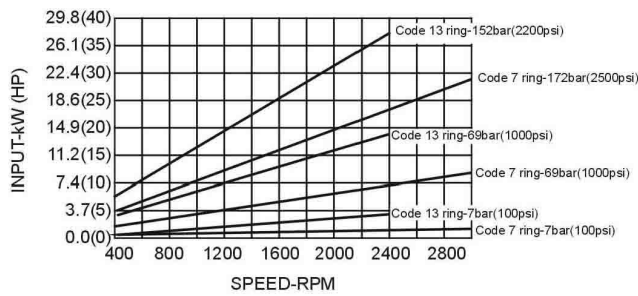
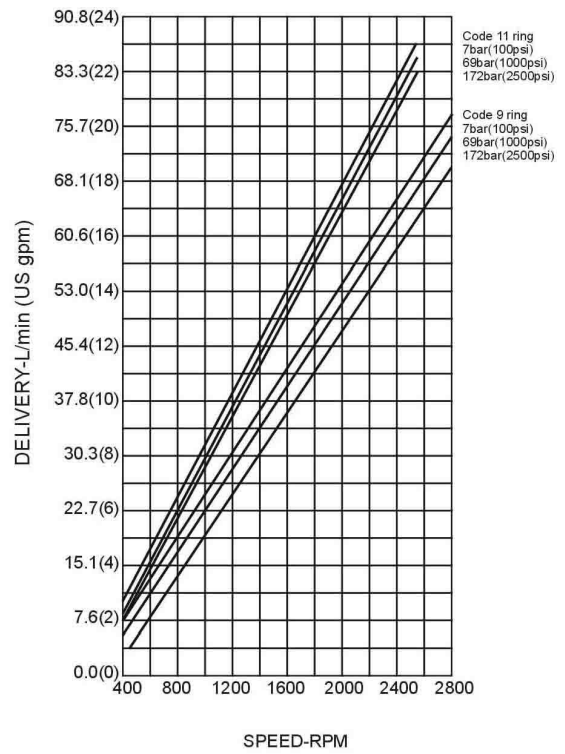


V20

Code 7 & 13 rings

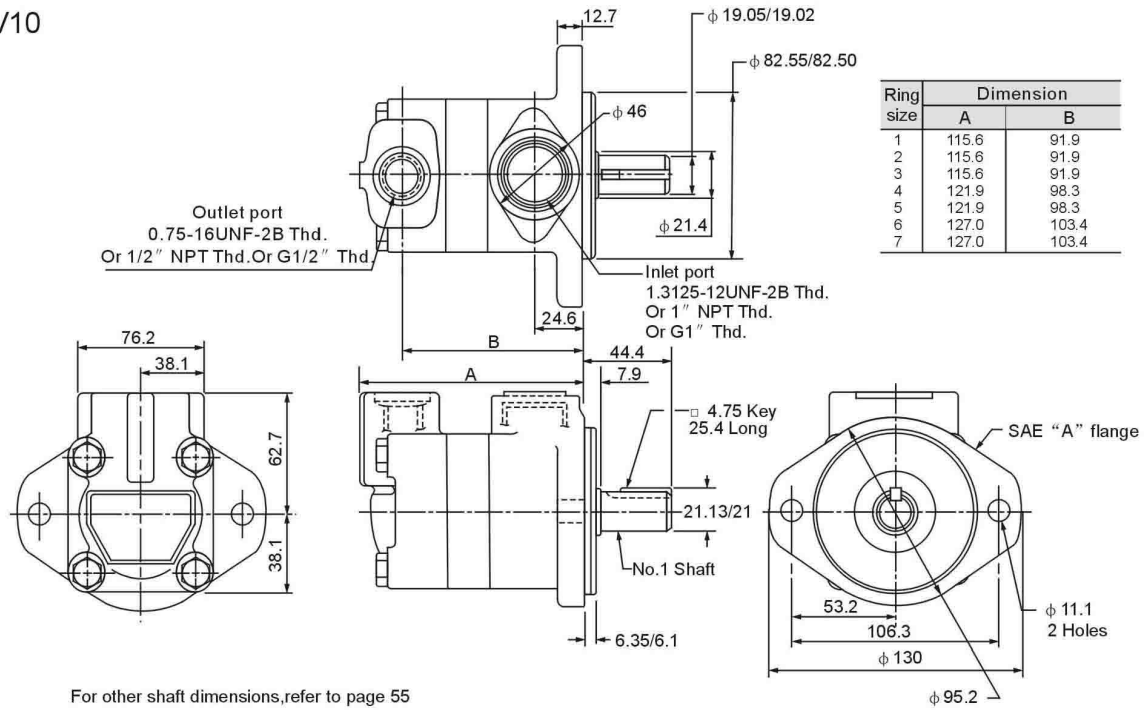


Code 9 & 11 rings

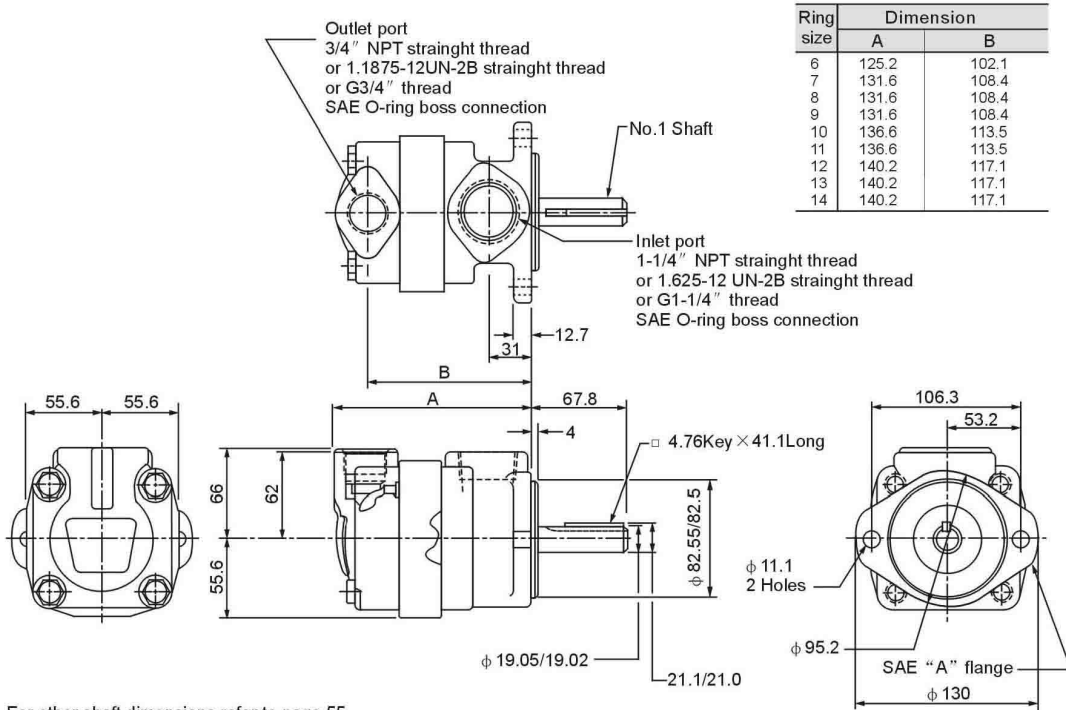


# Installation dimensions

V10



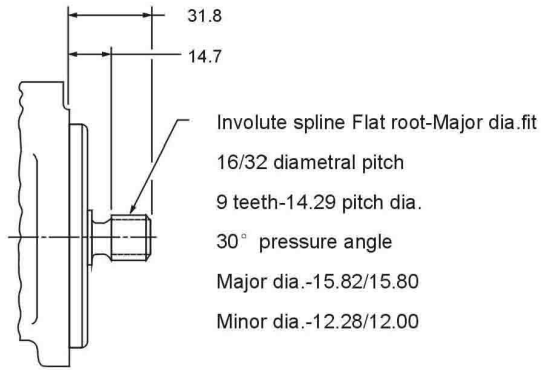
V20



# Installation dimensions

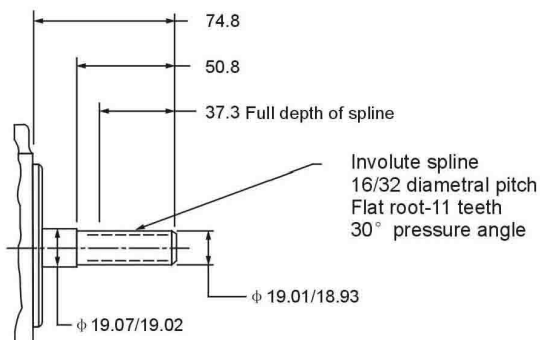
## ● V10 Series Splined Shafts

No.11 Splined Shafts



## ● V20 Series Splined Shafts

No.11 Splined Shafts



No.62 Splined Shafts

